



SKYBREAK



SKYBREAK

CSIPOSHFEEL®

INSPIRATION



EXPERIENCE **AWE**

When we look up at the clouds, the experience we share is nearly identical to the experience of our earliest ancestors. Though today we understand how clouds come to be, we are still awestruck by their colossal scale, at their visibility from miles and miles away, and the power they can hold inside. There still remains an element of mystery, and element of spectacle that draws in our attention and impresses upon us the true meaning of “awesome”.

SKYBREAK

CSIPOSHFEEL®

INTRODUCTION



The PoshFelt® Skybreak collection chases the wonderment and grandeur of their namesake by forming suspended compositions of simple shapes, providing top-tier noise reduction precisely where you need it. Our 100% wool acoustic felt presents a curated palette of colors to suit your space, and has a soft heathered look that reads beautifully.

SKYBREAK

CSIPOSHFEEL[®]

SPECIFICATIONS

CONTENT	PoshFelt [®] 100% wool acoustic felt
NRC RATING	0.45-0.9 NRC depending on installation
SIZING	Varies by design
WEIGHT	Varies by design; 0.5-1 lb / ft ²
COLORS	30 premier colorways
INSTALLATION	CSI Ceiling Suspension System
FIRE RATING	ASTM E84, Class-A Fire Rated Available
ENVIRONMENTAL	Contributes to LEED v4 Credits
MAINTENANCE	Vacuum to remove dust Clean spills with clean damp cloth, soap, water. Mild fabric detergents. Always test on hidden areas first.



Wall Mounted



Ceiling Mounted



Ceiling Suspended



Fully Suspended



Mobile



Free Standing



Modular



Furniture Attachment

SKYBREAK

CSIPOSHFEEL®

FEATURES



WOOL FELT

Non-toxic, non-allergenic, and anti-microbial wool. 100% renewable and cruelty free.



TACTILE

100% wool acoustic felt provides soft and luxurious tactile experience.



DURABLE

Impact resistant, will not deteriorate and is non-hygroscopic.



ACOUSTICAL INSULATION

Outstanding performance in sound absorption.



ENVIRONMENTAL

100% recyclable, VOC free, non-toxic and non-allergenic.



FIRE RATED

Class A rating, complies with ASTM E84.



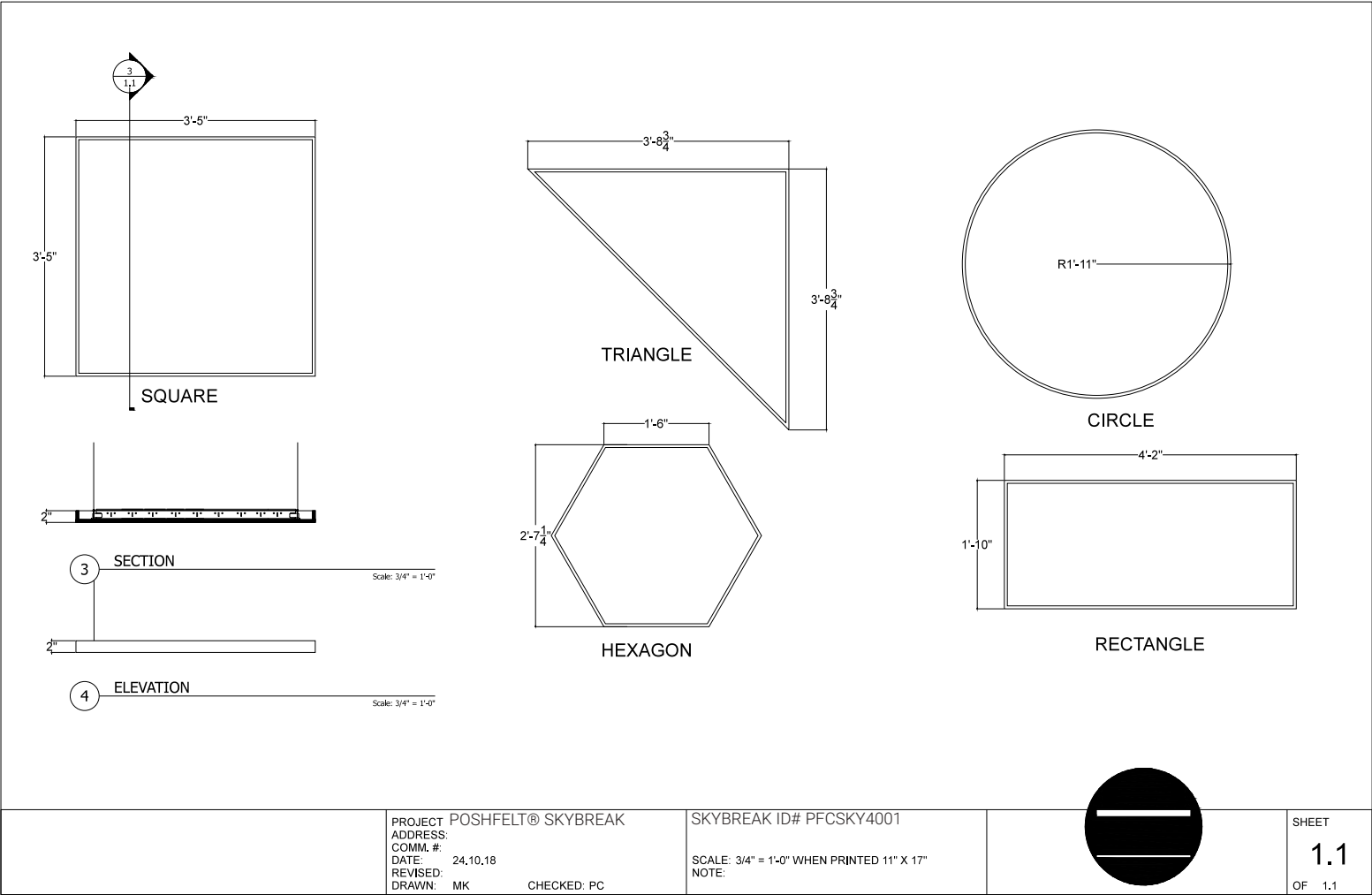
SKYBREAK

CSIPOSHFE[®]L[®]

DETAIL



Ceiling
Suspended



PROJECT POSHFELT[®] SKYBREAK
ADDRESS:
COMM. #:
DATE: 24.10.18
REVISED:
DRAWN: MK CHECKED: PC

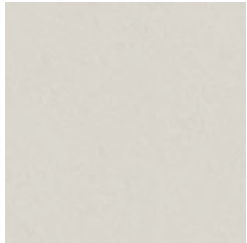
SKYBREAK ID# PFCSKY4001
SCALE: 3/4" = 1'-0" WHEN PRINTED 11" X 17"
NOTE:

SHEET
1.1
OF 1.1



CSI POSHFELT®

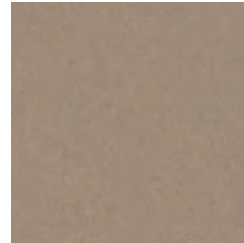
COLORWAYS



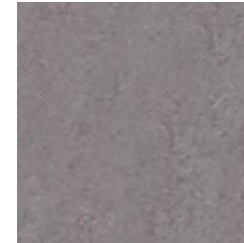
PSH174
Linen



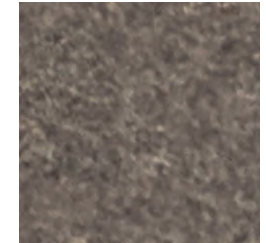
PSH118
Ivory Lace



PSH127
Mocha



PSH004
Porpoise



PSH003
Otter



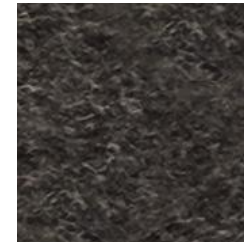
PSH006
Shiitake



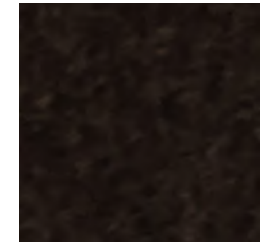
PSH175
Dovetail



PSH002
Heather



PSH179
Arctic Seal



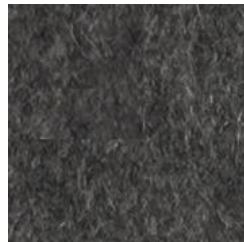
PSH180
Iron Ore



PSH178
Fawn



PSH176
Warmstone



PSH001
Gray Matter



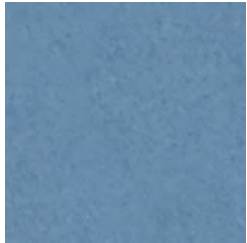
PSH161
Black Swan



PSH005
Black Beauty

CSI POSHFELT®

COLORWAYS



PSH016
Freshwater



PSH149
Jamaica Bay



PSH152
Blue Nile



PSH160
Admiral Blue



PSH142
Plum Purple



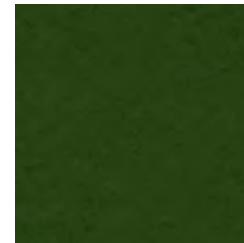
PSH015
Goldfinch



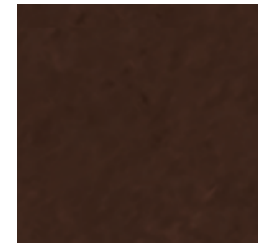
PSH013
Parakeet



PSH164
Fresh Lime



PSH012
Grasshopper



PSH146
Auburn



PSH014
Knockout Orange



PSH008
Bonfire



PSH137
Passion Flower



PSH139
Cayenne



PSH009
Poinsettia

CSI POSHFELT®

COLORWAYS



PSH509
Cairo



PSH503
Savanna



PSH504
Earth



PSH506
Bracken



PSH501
Mire



PSH505
Garrigue



PSH507
Hive



PSH508
Oahu



PSH502
Pacific