



ATLANTIC



ATLANTIC

CSIPOSHFEEL[®]

INSPIRATION



EXPERIENCE **IMMERSION**

Nothing in our world is as vast or powerful as the ocean—a perpetually roiling boundary between us and the mysteries of the deep. Immerse yourself below the surface, and consider the sky as it appears from below; an undulating, warped curtain of refracted light, constantly in motion. Imagine the rays of sunlight focusing and blurring, flashing through the water in a ceaseless display, and the swell of waves as they warp the world around you.

ATLANTIC

CSIPOSHFEEL®

INTRODUCTION



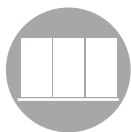
PoshFelt® Atlantic is a ceiling-suspended acoustic feature that reflects the character of the ocean, immersing your space in a calm hush like the bottom of the sea. The curvature of the form and latticed panels work together to maximize sound diffusion and present a composition that is equal parts art installation and acoustic control.

ATLANTIC

CSIPOSHFE[®]L[®]

SPECIFICATIONS

CONTENT	PoshFelt [®] 100% wool acoustic felt
NRC RATING	0.45-0.9 NRC depending on installation
SIZING	Custom Sizing available
WEIGHT	Varies by design; 0.5-1 lb / ft ²
COLORS	30 premier colorways
INSTALLATION	CSI Ceiling Suspension System
FIRE RATING	ASTM E84, Class-A Fire Rated Available
ENVIRONMENTAL	Contributes to LEED v4 Credits
MAINTENANCE	Vacuum to remove dust Clean spills with clean damp cloth, soap, water. Mild fabric detergents. Always test on hidden areas first.



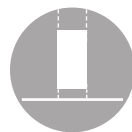
Wall Mounted



Ceiling Mounted



Ceiling Suspended



Fully Suspended



Mobile



Free Standing



Modular



Furniture Attachment

ATLANTIC

CSIPOSHFELT®

FEATURES



WOOL FELT

Non-toxic, non-allergenic, and anti-microbial wool. 100% renewable and cruelty free.



TACTILE

100% wool acoustic felt provides soft and luxurious tactile experience.



DURABLE

Impact resistant, will not deteriorate and is non-hygroscopic.



ACOUSTICAL INSULATION

Outstanding performance in sound absorption.



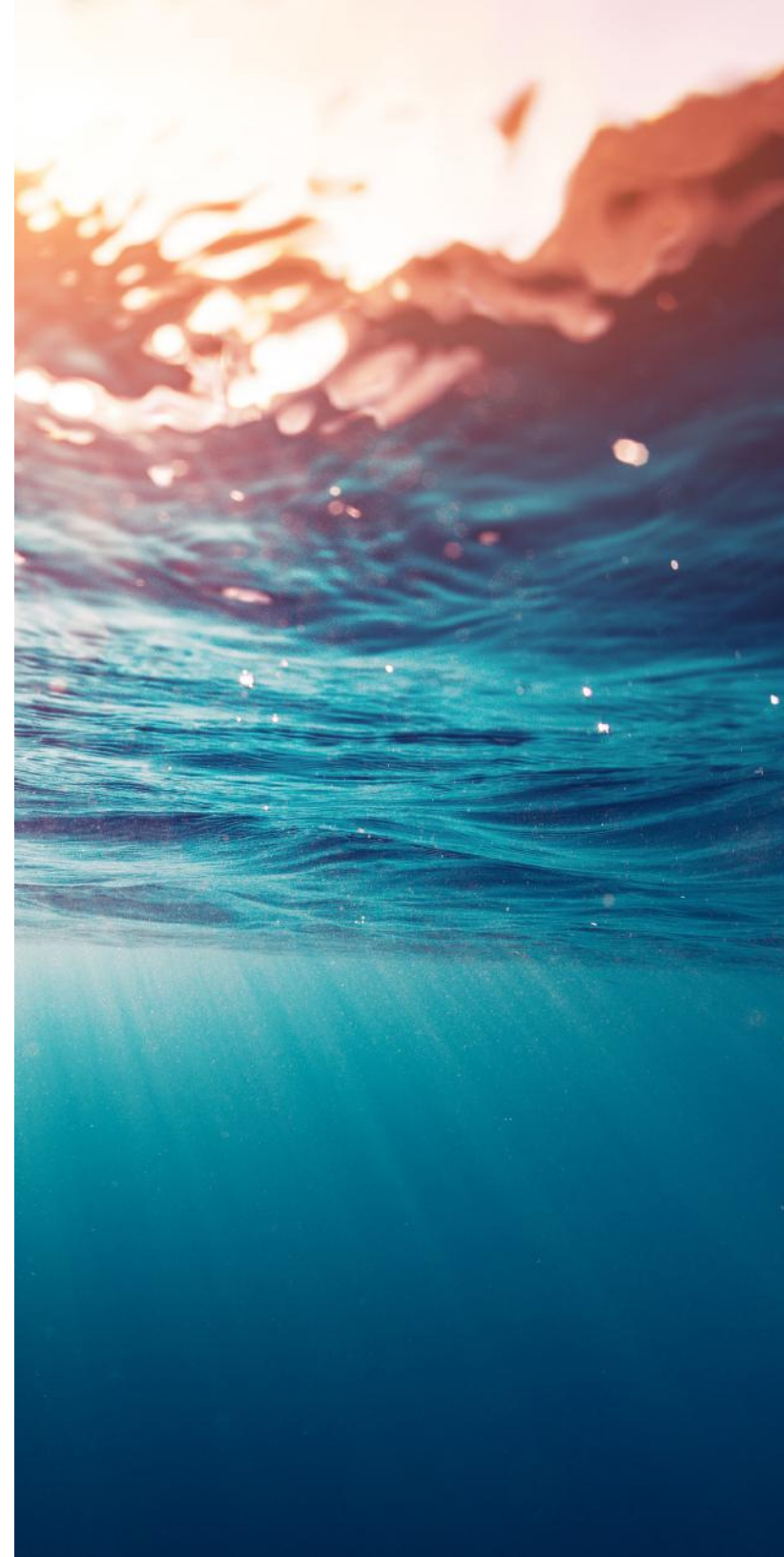
ENVIRONMENTAL

100% recyclable, VOC free, non-toxic and non-allergenic.



FIRE RATED

Class A rating, complies with ASTM E84.



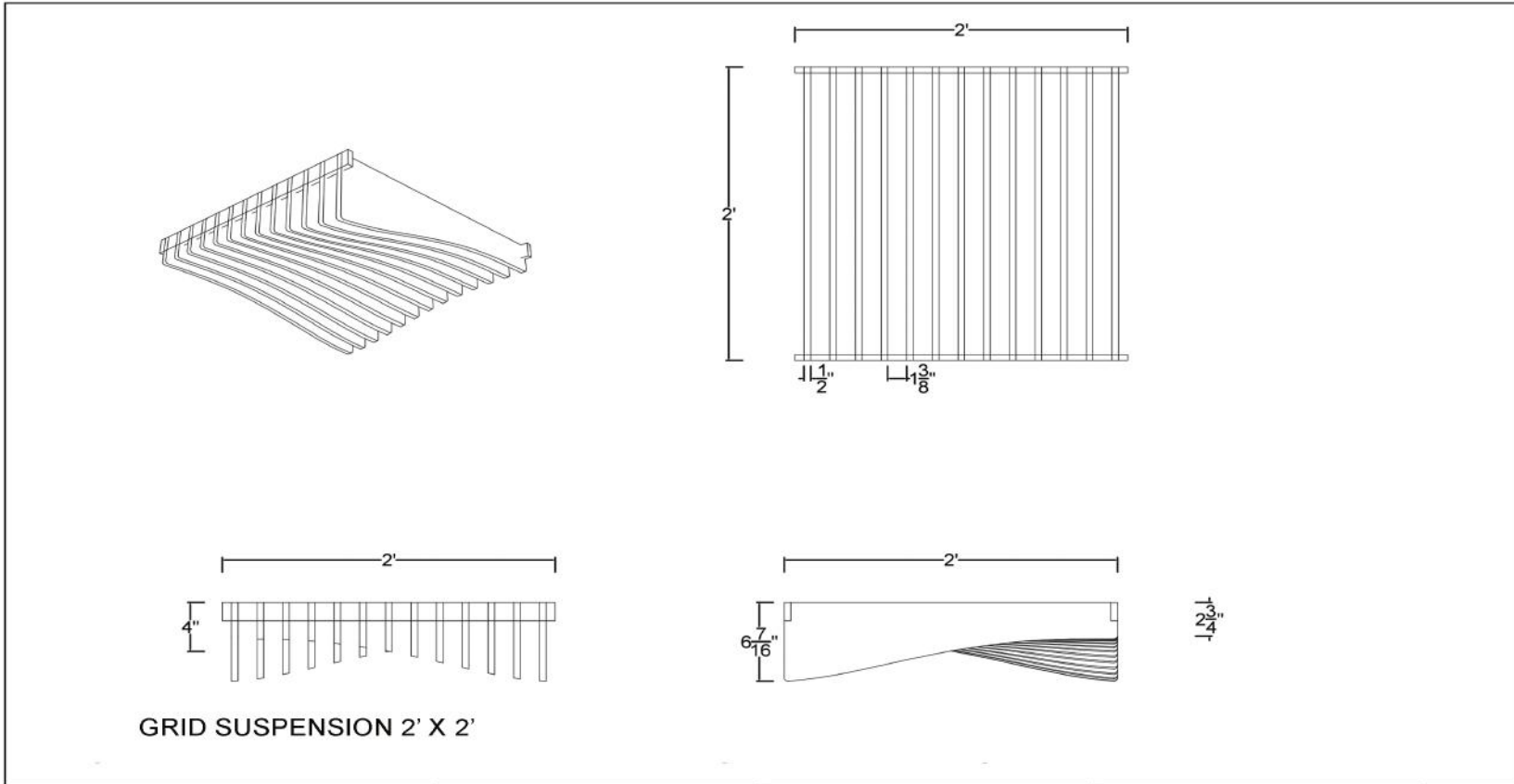
ATLANTIC

CSIPOSHFE[®]L[®]T

DETAIL



Ceiling
Mounted



PROJECT POSHFELT® ATLANTIC
 ADDRESS:
 COMM. #:
 DATE: 24.10.18
 REVISED:
 DRAWN: MK CHECKED: PC

POSHFELT® ID# PFCATL4401
 CSI PANEL LAYOUT
 SCALE: AS NOTED
 NOTE:

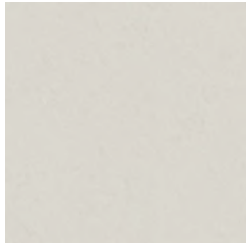
A1 ADRIFT

SHEET
1.1
 OF 1.1



CSI POSHFELT®

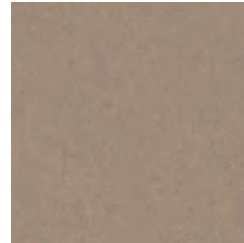
COLORWAYS



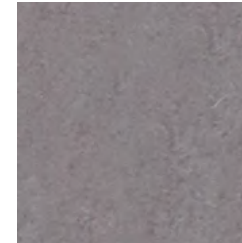
PSH174
Linen



PSH118
Ivory Lace



PSH127
Mocha



PSH004
Porpoise



PSH003
Otter



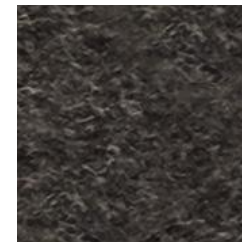
PSH006
Shiitake



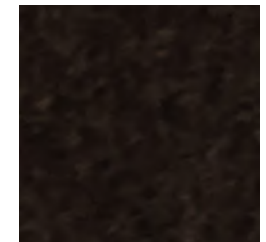
PSH175
Dovetail



PSH002
Heather



PSH179
Arctic Seal



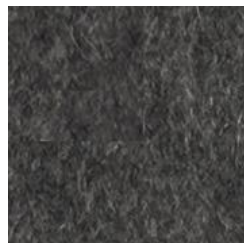
PSH180
Iron Ore



PSH178
Fawn



PSH176
Warmstone



PSH001
Gray Matter



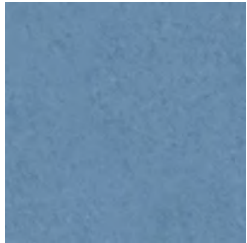
PSH161
Black Swan



PSH005
Black Beauty

CSI POSHFELT®

COLORWAYS



PSH016
Freshwater



PSH149
Jamaica Bay



PSH152
Blue Nile



PSH160
Admiral Blue



PSH142
Plum Purple



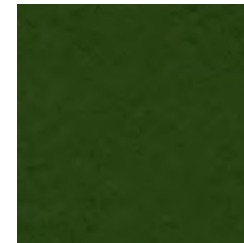
PSH015
Goldfinch



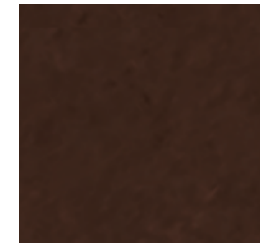
PSH013
Parakeet



PSH164
Fresh Lime



PSH012
Grasshopper



PSH146
Auburn



PSH014
Knockout Orange



PSH008
Bonfire



PSH137
Passion Flower



PSH139
Cayenne



PSH009
Poinsettia

CSI POSHFELT®

COLORWAYS



PSH509
Cairo



PSH503
Savanna



PSH504
Earth



PSH506
Bracken



PSH501
Mire



PSH505
Garrigue



PSH507
Hive



PSH508
Oahu



PSH502
Pacific