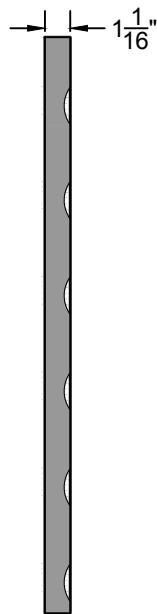


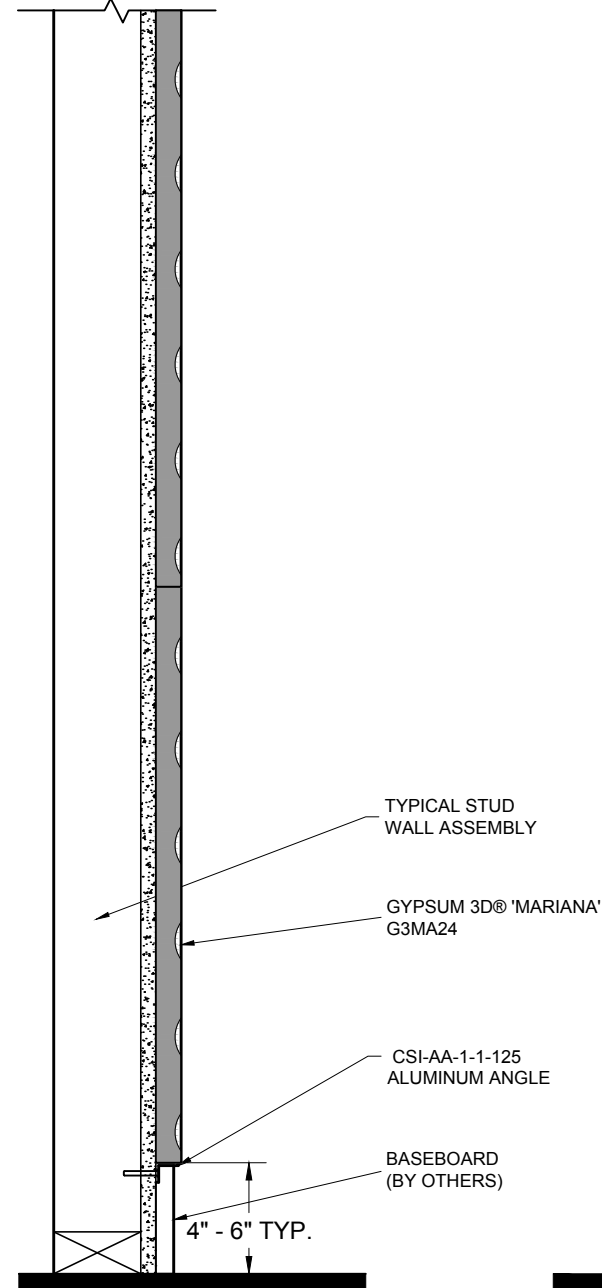
4 GYPSUM3D® TILE ELEV. Scale: 1-1/2" = 1'-0"



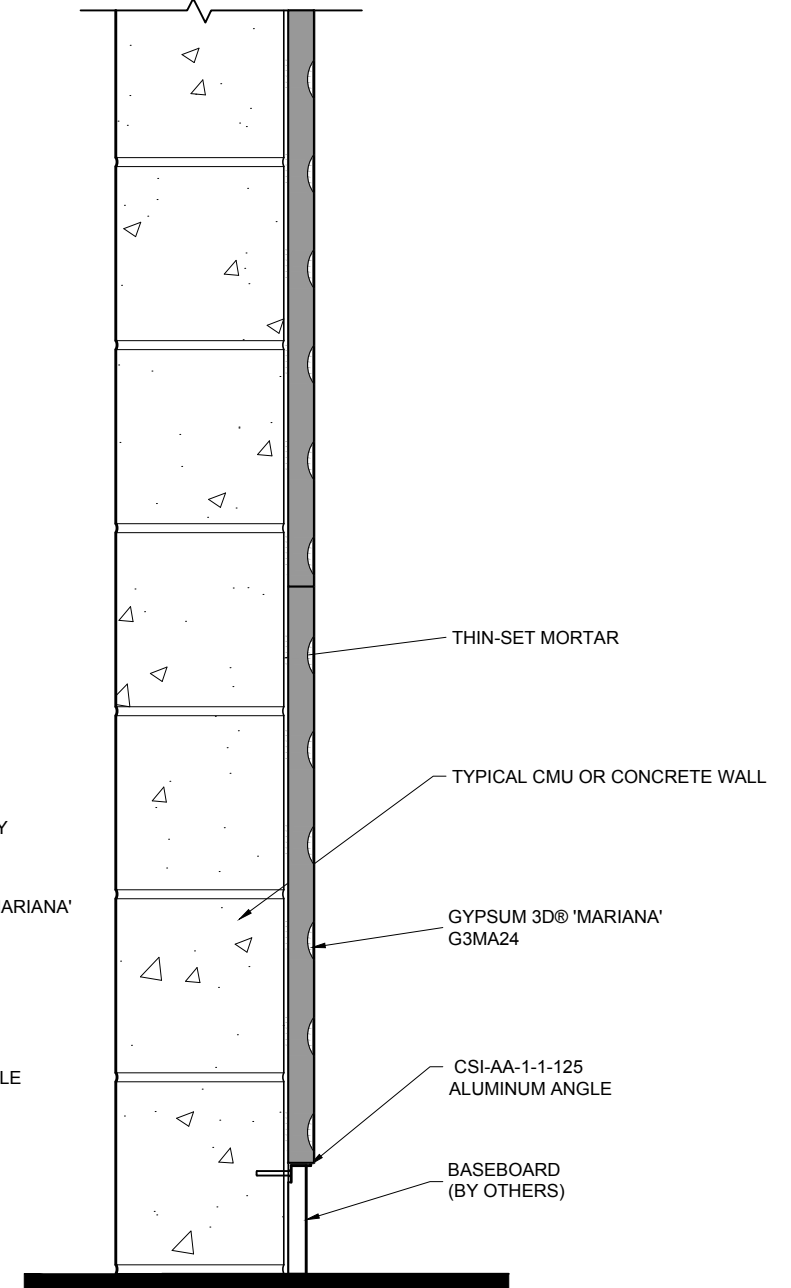
3 GYPSUM3D® TILE SECT. Scale: 1-1/2" = 1'-0"

NOTES:

- A. Not recommended in rooms where high humidity may be encountered, such as the kitchen, bath or utility room.
- B. The surface must be primed and sealed as may be required for the subsequent finish coats.
- C. Before applying the sealer, remove all loose dirt and dust. Be sure the joint treatment is thoroughly dry before any application of sealer or paint.
- D. Under normal atmospheric conditions, a waiting period of 12 to 18 hours after application of primer-sealer should be observed before decoration is applied.
- E. Gypsum must not be used in direct moisture exposed installations. When used in protected locations like underground garages and open lobbies, surface shall be painted with not less than two coats of exterior paint.
- F. More than one coat of sealer may be necessary. Each coat must be thoroughly dry before applying another.



2 TYPICAL STUD WALL SECTION Scale: 1-1/2" = 1'-0"



1 TYPICAL CMU/CONCRETE WALL SECTION Scale: 1-1/2" = 1'-0"



PROJECT GYPSUM3D®
 ADDRESS:
 COMM. #:
 DATE: 24.10.18
 REVISED:
 DRAWN: MK CHECKED: PC

PERFORATED
 CSI PANEL LAYOUT
 SCALE: SCALED FOR 11x17
 NOTE:

SHEET
 1.1
 OF 1.1